



# Primary Flowpoints

## Gunmetal Range

- ◆ Minimal maintenance
- ◆ Large viewing window to show you the contents of your pipe
- ◆ High quality robust design
- ◆ Pressures up to 16 bar
- ◆ Temperatures up to 200°C
- ◆ Short lead times
- ◆ Designed and manufactured in the UK

### STYLE 'GP' - STRAIGHT THROUGH WITH SPOUT

Ideal for gravity feed systems, intermittent flow, liquids containing entrained air and low flow rates. This model has an integral drip lip and can be mounted in any position.

### STYLE 'GR' - TWIN ROTOR

This model has two rotors mounted close to each glass to show you if the liquid is flowing. The indicator can be mounted in any position, and the light weight rotors will operate over a wide flow range. The maximum operating temperature is 100°C.

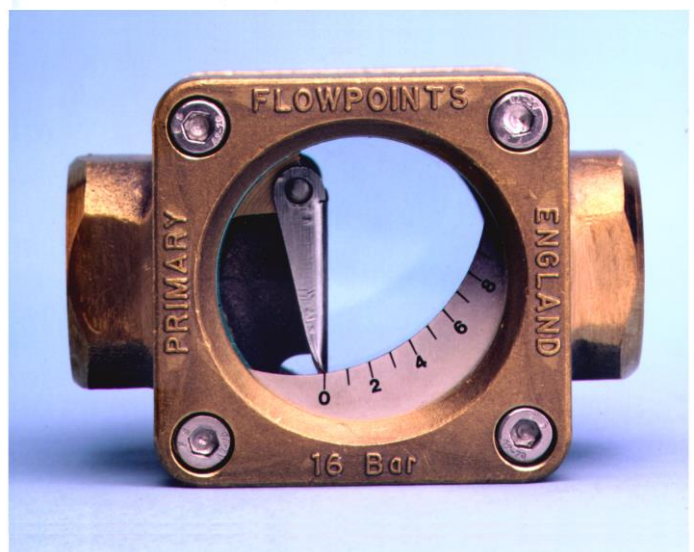
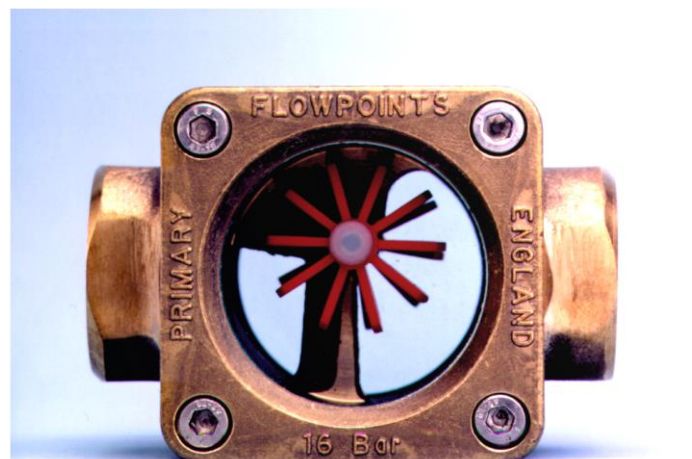
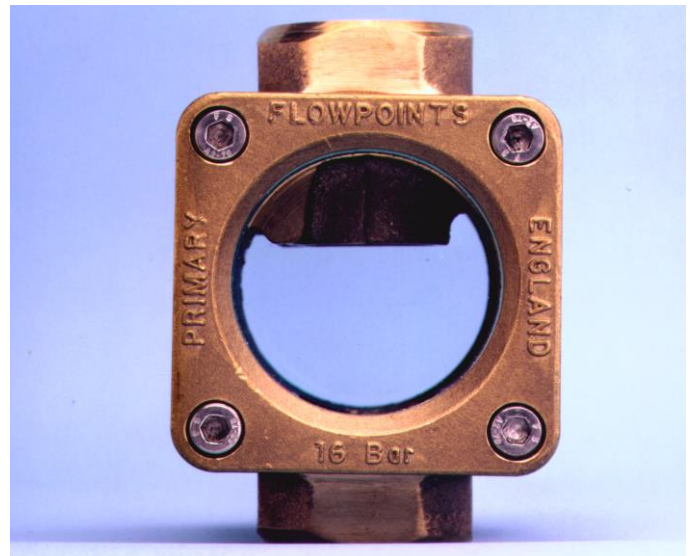
### STYLE 'GF' - FLAP WITH SCALEPLATE

When you need to know the actual flow rate this model will give you a reading of 0 to 10 on a scale plate. Charts providing the approximate water flow rate to scale reading are available. The basic model is suitable for horizontal flow. A spring loaded flap (Style 'GFS') is available for vertical flow and for higher flow rates.

#### Options:

**Borosilicate glass** - for use with steam and condensate to a maximum working pressure of 6 Bar.

**Connections** - available with BSPP, BSPT or NPT.



**Tel: 01922 650009**

**Fax: 01922 640326**

## Specification Code

Code			Description
GP			Gunmetal body BS 1400 LG2 - straight through
GR			Gunmetal body BS 1400 LG2 - twin rotor
GF			Gunmetal body BS 1400 LG2 - flap
	B		Glass Material & Pressure Range Toughened soda lime glass to BS3463 rated to 16 bar (Standard) Toughened borosilicate glass to BS3463
	015		Indicator Size 15mm / 1/2"
	020		20mm / 3/4"
	025		25mm / 1"
	1		End Connection BSP
	2		BSPT
	3		NPT

## Materials of Construction

Body - Gunmetal BS 1400 LG2

Covers - Brass BS 2872 CZ 122

Windows - Toughened Soda Lime BS 3463

Toughened Borosilicate BS 3463

Gaskets - Klingersil C4400

Edge Protectors - Klingersil C4400

Fasteners - Stainless Steel A2

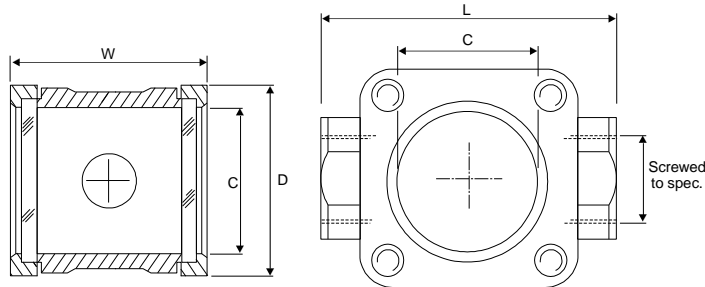
Rotors - POM ('Hostaform')

Flap - Stainless steel ASTM A351 CF8M (316)

Spindle - Stainless steel ASTM A351 CF8M (316)

Scaleplate - ANSI 302 Type

## Dimensions



NOMINAL BORE	LENGTH L	WIDTH W	DEPTH D	CLEARVIEW C	WEIGHT (KG)
15mm	85	68	60	42	1.0
20mm	85	68	60	42	1.0
25mm	95	74	60	42	1.3

## Minimum Flow Requirements

based on water at 20°C

Nominal Bore	Style 'GR' litres/min	Pressure drop at 2 metres/second
15mm	2.5	0.09 Bar
20mm	3.0	0.09 Bar
25mm	5.0	0.09 Bar

**Maximum Temperature:** 200°C (except style 'GR' - 100°C)

**Tel: 01922 650009**

**Fax: 01922 640326**